

# Self-evaluation Summary Dashboard

Produce custom dashboards  
at [fftaspire.org](http://fftaspire.org)

## The Clarendon Academy

LA Wiltshire DfE 8654002 Produced December 2019

### Reports

- Overview
- Attainment & Progress
- Pupil groups
- Subjects
- Scatterplot
- Context

### What it tells you

- What are the strengths and weaknesses of your school?
- How does attainment and pupil progress at your school compare to the national average?
- How are you performing in different subjects?
- Do you have any under-performing groups of pupils?
- How might the context of your school affect performance?
- How does pupil attendance compare to the national average?

### About the data shown



#### Filters

No filters chosen (all pupils included)

You can use filters to view a subset of pupils



#### Indicators

Average Points Score (A-level)

%A\*-C (A-level)

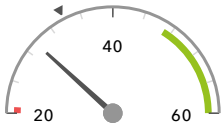
# Overview

## KS5 Attainment 2019 · Actual results

50 pupils

Average Points Score (A-level)

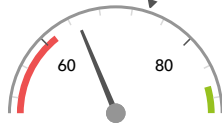
29.4 pts



In line with the national average (33.9) ◀

%A\*-C (A-level)

65%



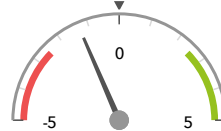
In line with the national average (74%) ◀

## KS5 Progress 2019 · Value Added

49 matched pupils

Average Points Score (A-level)

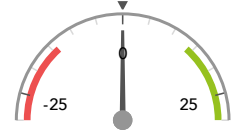
-1.3 pts



In line with the national average (0) ◀

%A\*-C (A-level)

-0%



In line with the national average (0%) ◀

## KS5 higher and lower performing pupil groups 2019

	Higher performing	Lower performing
<b>Overall achievement</b> pupil progress	Summer Term (16)	Autumn Term (12) Middle attainers (14) Spring Term (21)
<b>Subjects</b> pupil progress	Religious Studies (10) Geography (13)	Biology (15) Psychology (11) Chemistry (10) Mathematics (11) History (15)

# Attainment & progress

## KS5 Attainment 2019

50 pupils

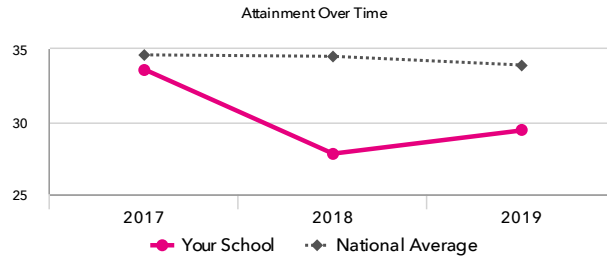
Average Points Score (A-level)

**29.4 pts**

FFT Rank



In line with the national average (33.9)



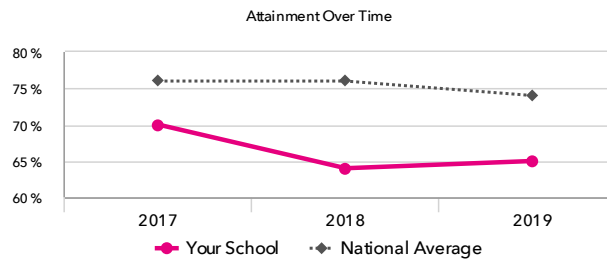
%A\*-C (A-level)

**65%**

FFT Rank



In line with the national average (74%)



## KS5 Progress 2019

49 matched pupils

Average Points Score (A-level)

**-1.3 pts**

FFT Rank



In line with the national average (0)

%A\*-C (A-level)

**-0%**

FFT Rank



In line with the national average (0%)

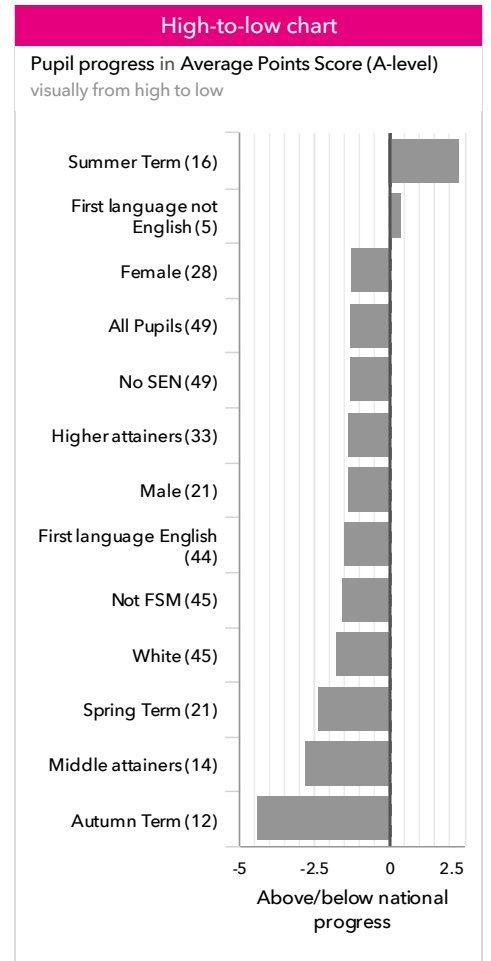
## KS5 performance summary

	Actual results			Pupil progress		
	2017	2018	2019	2017	2018	2019
Number of Pupils / % Matched	56	35	50	100%	100%	98%
Average Points Score (A-level)	33.6	27.8	29.4	-4.0	-4.9	-1.3
Average Grade (A-level)	C+	C-	C	-0.4	-0.5	-0.1
%A*-A (A-level)	26% ↑	11%	10% ↓	-3%	-4%	-5%
%A*-B (A-level)	50%	26% ↓	40%	-7%	-15%	+1%
%A*-C (A-level)	70%	64%	65%	-11%	-9%	-0%
%A*-E (A-level)	94% ↓	90% ↓	92% ↓	-8% ↓	-10% ↓	-6%
Average Point Score (best 3 A levels)	25.4 ↓	23.0 ↓	29.4 ↑	-3.6 ↓	-6.2 ↓	-0.4 ↑
% A levels AAB or higher (2+ facilitating subjects)	13%	4%	3%	-2%	-3%	-7%
% 3 A Levels A*-A or higher	9%	0%	0%	-1%	-5%	-7%
% 3 A Levels AAB or higher	19%	7%	3% ↓	-0%	-3%	-10%

# Pupil groups

## KS5 Pupil groups performance 2019

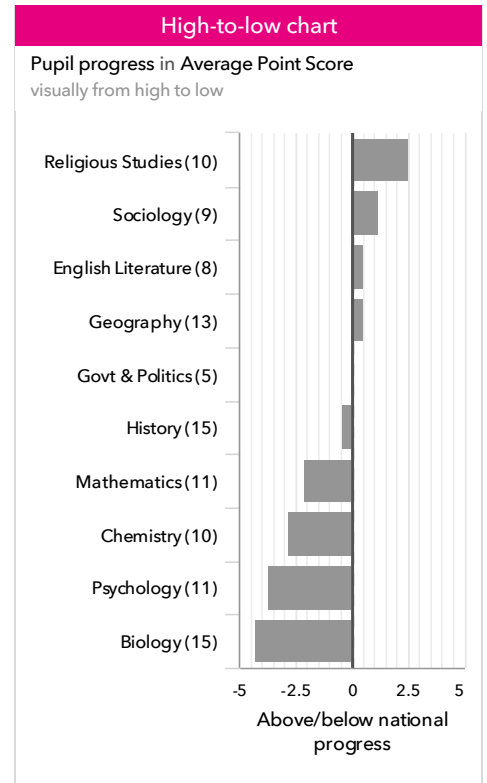
			Actual results		Pupil progress	
Pupils			Average Points Score (A-level)	%A*-C (A-level)	Average Points Score (A-level)	%A*-C (A-level)
<b>Summary</b>	All Pupils	50	29.4	65%	-1.3	-0%
<b>Gender</b>	Male	22	27.4	61%	-1.4	+3%
	Female	28	30.9	69%	-1.3	-3%
<b>Prior Attainment</b>	Higher attainers	33	33.6	78%	-1.4	+0%
	Middle attainers	14	17.9	28%	-2.8	-7%
	Lower attainers	2	20.0	50%	+10.2	+40%
<b>FSM</b>	FSM	4	34.4	89%	+1.6	+13%
	Not FSM	46	29.0	63%	-1.6	-2%
<b>Term of Birth</b>	Autumn Term	12	30.8	65%	-4.4	-6%
	Spring Term	22	28.4	66%	-2.3	-2%
	Summer Term	16	29.8	65%	+2.4	+5%
<b>SEN Group</b>	No SEN	50	29.4	65%	-1.3	-0%
<b>EAL</b>	First language not English	6	29.4	75%	+0.4	+13%
	First language English	44	29.4	64%	-1.5	-2%
<b>Ethnicity</b>	White	45	28.7	62% <span style="color:red">-</span>	-1.8	-3%
	Other Asian	1	33.3	100%	-8.6	+3%
	Chinese	2	38.3	100%	+14.6	+53%
	Any Other	1	26.7	67%	-4.8	-8%
	Unknown	1	40.0	100%	-	-



# Subjects

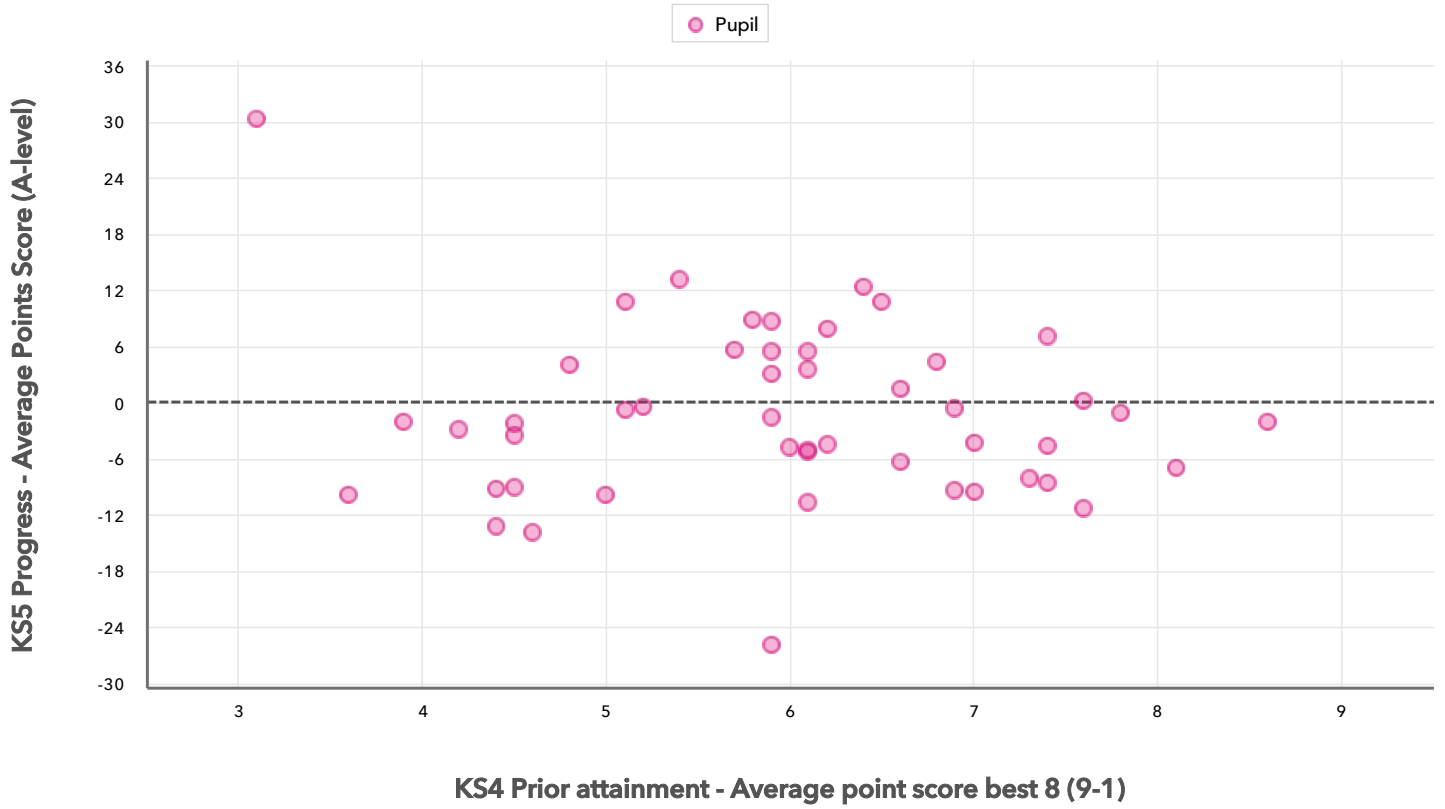
## KS5 subject performance 2019

			Actual results		Pupil progress	
Pupils			Average Point Score	% A*-C	Average Point Score	% A*-C
<b>A Level Subjects</b>	Art&Des : Fine Art	2	35	100%	+0.1	+19%
	Biology	15	19 <span style="color:red">-</span>	33% <span style="color:red">-</span>	-4.3	-9%
	Bus. Studs:Single	4	35	100%	+2.0	+21%
	Chemistry	10	22 <span style="color:red">-</span>	40%	-2.8	-8%
	Com.Stds/Computing	1	20	0%	-14.4	-82%
	D&T Product Design	1	50	100%	+21.1	+34%
	English Literature	8	33	63%	+0.6	-6%
	French	1	20	0%	-11.0	-72%
	Geography	13	33	77%	+0.5	+2%
	Govt & Politics	5	32	80%	+0.1	+13%
	History	15	33	87%	-0.4	+10%
	Law	3	23	33%	+1.4	-7%
	Mathematics	11	35	73%	-2.1	+0%
	Maths (Further)	3	27	33%	-2.2	-26%
	Physics	1	30	100%	+6.9	+56%
	Psychology	11	24	64%	-3.6	+6%
	Religious Studies	10	33	70%	+2.6	+3%
	Sociology	9	33	78%	+1.2	+7%
	Spanish	1	40	100%	-	-



# Scatterplot

KS5 Pupil scatterplot 2019 50 pupils highlighted by All pupils ▼



# Context

## Context · Year 13

		Pupils	Comparative profile 2018 / 2019		Absence during Key Stage 5		Persistent absence during Key Stage 5	
		School	School	National	School	National	School	National
<b>Summary</b>	All Pupils	50	100%	100%	-	-	-	-
<b>Gender</b>	Male	22	44%	45%	-	-	-	-
	Female	28	56%	55%	-	-	-	-
<b>Prior Attainment</b>	Higher attainers	33	66%	71%	-	-	-	-
	Middle attainers	14	28%	27%	-	-	-	-
	Lower attainers	2	4%	2%	-	-	-	-
<b>FSM</b>	FSM	4	8%	6%	-	-	-	-
	Not FSM	46	92%	94%	-	-	-	-
<b>Term of Birth</b>	Autumn Term	12	24%	35%	-	-	-	-
	Spring Term	22	44%	32%	-	-	-	-
	Summer Term	16	32%	33%	-	-	-	-
<b>SEN Group</b>	No SEN	50	100%	95%	-	-	-	-
<b>EAL</b>	First language not English	6	12%	17%	-	-	-	-
	First language English	44	88%	83%	-	-	-	-
<b>Ethnicity</b>	White	45	90%	71%	-	-	-	-
	Other Asian	1	2%	4%	-	-	-	-
	Chinese	2	4%	1%	-	-	-	-
	Any Other	1	2%	4%	-	-	-	-
	Unknown	1	2%	2%	-	-	-	-